



Catalog: OM105091



Scan to get more validated information

Rabbit anti-TEAD2 polyclonal antibody - middle region

Catalog: OM105091

100ug

Product profile

Product name	Rabbit anti-TEAD2 polyclonal antibody - middle region
Antibody Type	Primary Antibodies
Immunogen	The immunogen for anti-TEAD2 antibody: synthetic peptide directed towards the middle region of human TEAD2

Key Feature

Clonality	Polyclonal
Isotype	IgG
Host Species	Rabbit
Tested Applications	WB
Species Reactivity	Bovine Dog Guinea Pig Horse Human Mouse Rat
Concentration	1 mg/ml
Purification	Affinity purified

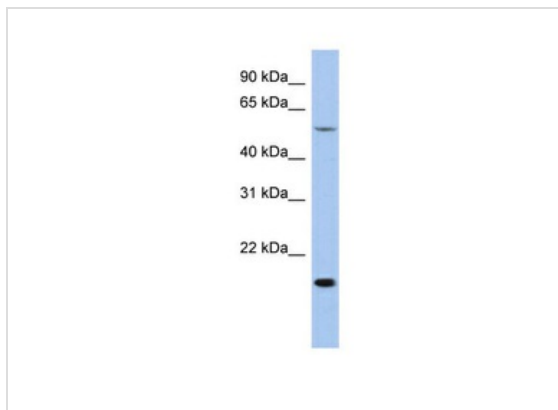
Target Information

Gene Symbol	TEAD2
Gene Synonyms	TEAD2
Gene Full Name	TEA domain family member 2
Gene Summary	TEAD2 is a putative transcription factor that binds to the SPH and GT-IIC enhansons (5'-GTGGAATGT-3'). TEAD2 may be involved in the gene regulation of neural development. TEAD2 binds to the M-CAT motif.
Alternative Names	ETF, TEF-4, TEF4, TEAD-2
Molecular Weight (MW)	49kDa
Sequence	447 amino acids

Database Links

Entrez Gene	8463
SwissProt ID	Q15562
Protein Accession	NP_003589

Application



Application

WB Suggested Anti-TEAD2 Antibody Titration: 0.2-1 ug/ml

ELISA Titer: 1:12500

Positive Control: HT 1080 cell lysate

Application Notes **WB:**1:500~1:2000

Notes:Optimal dilutions/concentrations should be determined by the researcher.

Additional Information

Form	Liquid
Storage Instructions	Aliquot and store at -20°C. Avoid repeated freeze / thaw cycles
Storage Buffer	phosphate buffered saline , pH 7.4, 150mM NaCl, 0.02% sodium azide and 50% glycerol.
Note	The product is for research use only,not for use in diagnostic or therapeutic procedures.

OmnimAbs.com

order@Omnimabs.com

506 N. GARFIELD AVE #210 ALHAMBRA, CA 91801

This product is for research use only and is not approved for use in humans or in clinical diagnosis. Primary Antibodies are guaranteed for 1 year from date of receipt