



Catalog: OM105092

Scan to get more validated information



Rabbit anti-MINA polyclonal antibody - N-terminal region

Catalog: OM105092

100ug

Product profile

Product name	Rabbit anti-MINA polyclonal antibody - N-terminal region
Antibody Type	Primary Antibodies
Immunogen	The immunogen for anti-MINA antibody: synthetic peptide directed towards the N terminal of human MIN A

Key Feature

Clonality	Polyclonal
Isotype	IgG
Host Species	Rabbit
Tested Applications	WB
Species Reactivity	Bovine Dog Horse Human Mouse Rat
Concentration	1 mg/ml
Purification	Affinity purified

Target Information

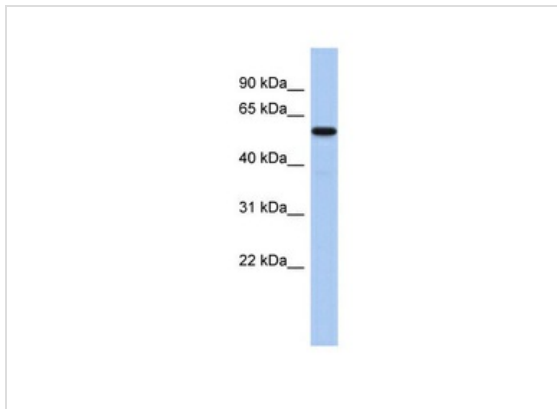
Gene Symbol	MINA
Gene Synonyms	MINA
Gene Full Name	MYC induced nuclear antigen
Gene Summary	MINA protein is directly involved in ribosome biogenesis, most likely during the assembly process of preribosomal particles. MINA is also involved in cell proliferation. MINA may have a role in esophageal squamous cell carcinoma, colon cancer and lung cancer. MINA is a c-Myc (MYC; MIM 190080) target gene that may play a role in cell proliferation or regulation of cell growth. (Tsuneoka et al., 2002 [PubMed 12091391]; Zhang et al., 2005 [PubMed 15897898]). [supplied by OMIM].
Alternative Names	DKFZp762O1912, FLJ14393, MDIG, MINA53, NO52

Molecular Weight(MW)	53kDa
Sequence	465 amino acids

Database Links

Entrez Gene	84864
SwissProt ID	Q8IUF8
Protein Accession	NP_694822

Application



Application
WB Suggested Anti-MINA Antibody Titration: 0.2-1 ug/ml
ELISA Titer: 1:62500
Positive Control: Human Liver

Application Notes **WB:**1:500~1:2000
Notes:Optimal dilutions/concentrations should be determined by the researcher.

Additional Information

Form	Liquid
Storage Instructions	Aliquot and store at -20°C. Avoid repeated freeze / thaw cycles
Storage Buffer	phosphate buffered saline , pH 7.4, 150mM NaCl, 0.02% sodium azide and 50% glycerol.
Note	The product is for research use only,not for use in diagnostic or therapeutic procedures.

OmnimAbs.com

order@Omnimabs.com

506 N. GARFIELD AVE #210 ALHAMBRA, CA 91801

This product is for research use only and is not approved for use in humans or in clinical diagnosis. Primary Antibodies are guaranteed for 1 year from date of receipt