



Catalog: OM105113

Scan to get more validated information



Rabbit anti-GLIS2 polyclonal antibody - N-terminal region

Catalog: OM105113

100ug

Product profile

Product name	Rabbit anti-GLIS2 polyclonal antibody - N-terminal region
Antibody Type	Primary Antibodies
Immunogen	The immunogen for anti-GLIS2 antibody: synthetic peptide directed towards the N terminal of human GLIS2

Key Feature

Clonality	Polyclonal
Isotype	IgG
Host Species	Rabbit
Tested Applications	WB ,IHC
Species Reactivity	Bovine Dog Guinea Pig Horse Human Mouse Rat
Concentration	1 mg/ml
Purification	Affinity purified

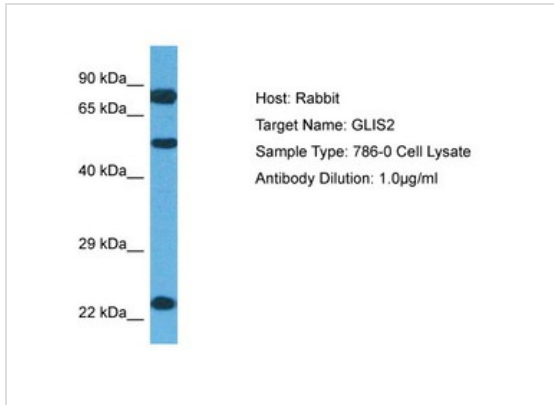
Target Information

Gene Symbol	GLIS2
Gene Synonyms	GLIS2
Gene Full Name	GLIS family zinc finger 2
Gene Summary	Members of the Kruppel-like zinc finger protein family, such as GLIS2, function as activators and/or repressors of gene transcription.
Alternative Names	NKL, NPHP7
Molecular Weight(MW)	56kDa
Sequence	524 amino acids

Database Links

Entrez Gene	84662
SwissProt ID	Q9BZE0
Protein Accession	NP_115964

Application



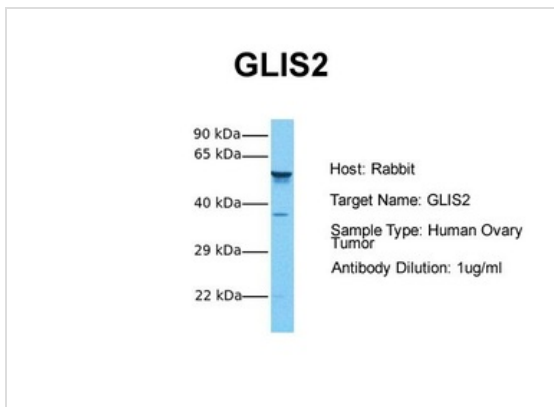
Application

Host: Rabbit

Target Name: GLIS2

Sample Tissue: Human 786-0 Whole Cell

Antibody Dilution: 1ug/ml



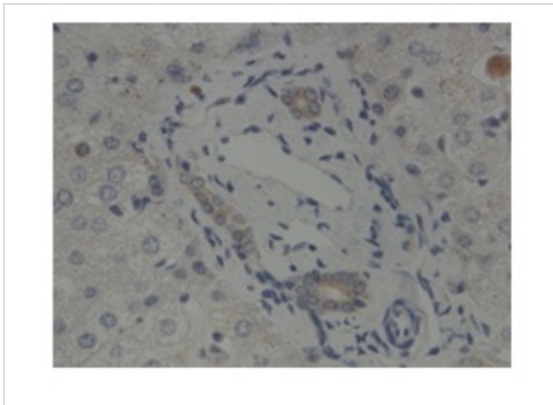
Application

Host: Rabbit

Target Name: GLIS2

Sample Tissue: Human Ovary Tumor

Antibody Dilution: 1.0ug/ml



Application

Sample Type: Human Bile Duct Primary

Dilution: 1:500

Application Notes **WB:**1:500~1:2000

IHC:1:50~1:200

Notes:Optimal dilutions/concentrations should be determined by the researcher.

Additional Information

Form Liquid

Storage Instructions Aliquot and store at -20°C. Avoid repeated freeze / thaw cycles
Storage Buffer phosphate buffered saline , pH 7.4, 150mM NaCl, 0.02% sodium azide and 50% glycerol.
Note The product is for research use only,not for use in diagnostic or therapeutic procedures.

OmnimAbs.com

order@Omnimabs.com

506 N. GARFIELD AVE #210 ALHAMBRA, CA 91801

This product is for research use only and is not approved for use in humans or in clinical diagnosis. Primary Antibodies are guaranteed for 1 year from date of receipt
