



Catalog: OM153674



Scan to get more validated information

# Actin Antibody (H-196) PE

Catalog: OM153674

100ul

## Product profile

<b>Product name</b>	Actin Antibody (H-196) PE
<b>Antibody Type</b>	Primary Antibodies
<b>Modification Notes</b>	All eukaryotic cells express Actin, which often constitutes as much as 50% of total cellular protein. Actin filaments can form both stable and labile structures and are crucial components of microvilli and the contractile apparatus of muscle cells. While lower eukaryotes, such as yeast, have only one Actin gene, higher eukaryotes have several isoforms encoded by a family of genes. At least six types of Actin are present in mammalian tissues and fall into three classes. $\alpha$ -Actin expression is limited to various types of muscle, whereas $\beta$ - and $\gamma$ -Actin are the principle constituents of filaments in other tissues. Members of the small GTPase family regulate the organization of the Actin cytoskeleton. Rho controls the assembly of Actin stress fibers and focal adhesion. Rac regulates Actin filament accumulation at the plasma membrane. Cdc42 stimulates formation of filopodia.

## Key Feature

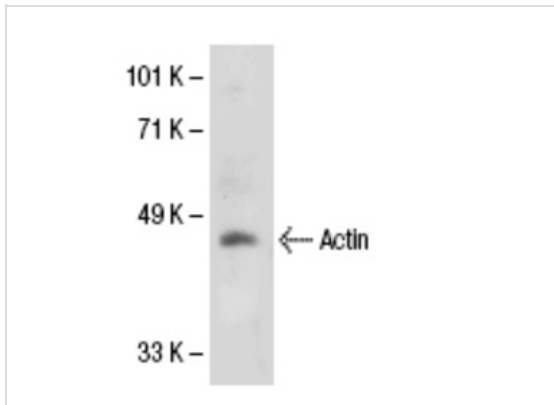
<b>Clonality</b>	Polyclonal
<b>Isotype</b>	IgG
<b>Host Species</b>	Rabbit
<b>Tested Applications</b>	WB ,IP ,IF ,FC ,ELISA
<b>Species Reactivity</b>	Human Mouse Rat
<b>Concentration</b>	1mg/ml
<b>Purification</b>	Affinity purified

## Target Information

<b>Alternative Names</b>	epitope corresponding to amino acids 180–375 mapping at the C-terminus of Actin of human origin
<b>Tissue Specificity</b>	epitope corresponding to amino acids 180–375 mapping at the C-terminus of Actin of human origin

## Database Links

## Application

**Application**

Western blot analysis of Actin expression in A-10 whole cell lysate.

**Application Notes**

reactive with a broad range of Actin isoforms of mouse, rat and human origin by WB, IP, IF, FCM and ELISA; also reactive with additional species, including equine, canine, bovine, porcine and avian:

## Additional Information

**Form**

Liquid

**Storage Instructions**

For short-term storage, store at 4° C. For long-term storage, aliquot and store at -20°C or below. Avoid multiple freeze-thaw cycles.

**Storage Buffer**

phosphate buffered saline , pH 7.4, 150mM NaCl, 0.02% sodium azide and 50% glycerol.

**Note**

The product is for research use only, not for use in diagnostic or therapeutic procedures.

# OmnimAbs.com

order@Omnimabs.com

506 N. GARFIELD AVE #210 ALHAMBRA, CA 91801

This product is for research use only and is not approved for use in humans or in clinical diagnosis. Primary Antibodies are guaranteed for 1 year from date of receipt