



Catalog: OM281801

Scan to get more validated information



# IKK- $\gamma$ (phospho Ser376) Antibody

Catalog: OM281801

100ug

## Product profile

<b>Product name</b>	IKK- $\gamma$ (phospho Ser376) Antibody
<b>Antibody Type</b>	Primary Antibodies
<b>Product description</b>	Familial incontinentia pigmenti (IP) is a genodermatosis that segregates as an X-linked dominant disorder and is usually lethal prenatally in males. In affected females it causes highly variable abnormalities of the skin, hair, nails, teeth, eyes, and central nervous system. The prominent skin signs occur in 4 classic cutaneous stages: perinatal inflammatory vesicles, verrucous patches, a distinctive pattern of hyperpigmentation, and dermal scarring. Cells expressing the mutated X chromosome are eliminated selectively around the time of birth, so females with IP exhibit extremely skewed X-inactivation. <sup>1</sup> ) Li Y., Proc. Natl. Acad. Sci. U.S.A. 96:1042-1047(1999).
<b>Immunogen</b>	IKK- $\gamma$ (phospho Ser376) antibody was raised against a peptide sequence around phosphorylation site of Serine 376 (Y-L-S (p)-S-P) derived from Human IKK- $\gamma$ .

## Key Feature

<b>Clonality</b>	Polyclonal
<b>Isotype</b>	IgG
<b>Host Species</b>	Rabbit
<b>Tested Applications</b>	IHC
<b>Species Reactivity</b>	Human
<b>Concentration</b>	1 mg/ml
<b>Purification</b>	Affinity purified

## Target Information

<b>Gene Symbol</b>	IKBKG
<b>Alternative Names</b>	FIP3, IKBKG, IKKAP1, IKKG, NF-kappaB
<b>Molecular Weight(MW)</b>	48 kDa
<b>Tissue Specificity</b>	The antibody detects endogenous levels of IKK- $\gamma$ only when phosphorylated at serine 376.

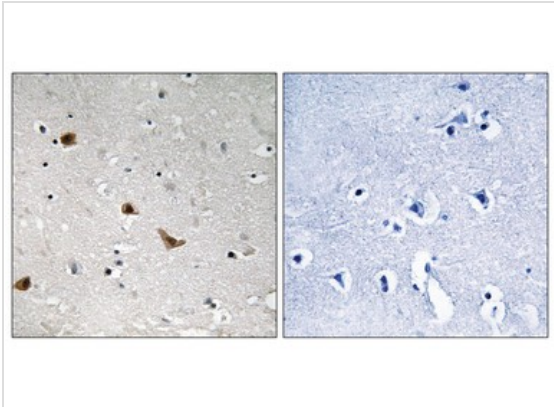
## Database Links

---

Entrez Gene	8517
Protein Accession	NP_001093327.1

## Application

---



### Application

Immunohistochemical analysis of paraffin-embedded human brain tissue using IKK- $\gamma$  (Phospho-Ser376) antibody (left) or the same antibody preincubated with blocking peptide (right).

**Application Notes** IHC:1:50~1:200

**Notes:**Optimal dilutions/concentrations should be determined by the researcher.

## Additional Information

---

<b>Form</b>	Liquid
<b>Storage Instructions</b>	Store antibody at -20°C for up to one year.
<b>Storage Buffer</b>	Antibody supplied in phosphate buffered saline (without Mg <sup>2+</sup> and Ca <sup>2+</sup> ), pH 7.4, 150mM NaCl, 0.02% sodium azide and 50% glycerol.
<b>Note</b>	The product is for research use only,not for use in diagnostic or therapeutic procedures.

# OmnimAbs.com

---

order@Omnimabs.com

506 N. GARFIELD AVE #210 ALHAMBRA, CA 91801

This product is for research use only and is not approved for use in humans or in clinical diagnosis. Primary Antibodies are guaranteed for 1 year from date of receipt